

Automotive data loggers for all types of vehicles and machinery

Connect your vehicles to your business. Log CAN bus & OBD2 data and extract it via USB, WiFi, 4G/LTE or Ethernet, or rely on our open-source API. Deploy advanced software to our Raspberry Pi based Edge devices using Docker and Tailscale.

AutoPi CAN-FD Pro

Our most powerful device to date, designed for full speed automotive datalogging of dual CAN-FD channels. The device comes with 32GB storage, which is extendable with a flashdrive. With a built-in 4G/LTE modem, the device can securely push data to your cloud solution. The device is built on the Raspberry Pi Compute Module.

Software is 100% free and included, no subscriptions. Use AutoPi Cloud for device management, device diagnostics and device over-the-air configuration and updates.



AutoPi Telematics Unit CM4

The upgraded, innovative and robust AutoPi TMU CM4 is the future of edge devices for automotive and telematics. It allows users for more possibilities and comes with a wealth of benefits. Use the device to build complex solutions and deploy them using Docker. Control the edge computer using our cloud platform and Tailscale to login directly on the device.

Upgraded with CAN-FD interface and Gigabit ethernet. The AutoPi TMU is built on the Raspberry Pi Compute Module 4 and comes with a dual CAN-FD interface with SocketCAN on top.



AutoPi Mini

AutoPi Mini - your plug & play, simple-to-use answer to next-level fleet telematics. Engineered for quick installation and wide vehicle compatibility, this compact powerhouse reads OEM and standard Data parameters.

The AutoPi Mini is perfect for reading a large number of EV parameters and we recently upgraded it to support a longer range of new models and parameters.



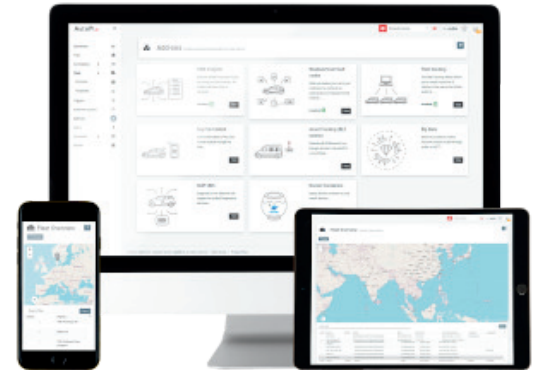
➤ Reach out to us at autopi@gasmspl.com

AutoPi Cloud Advanced Device Management for automotive data loggers

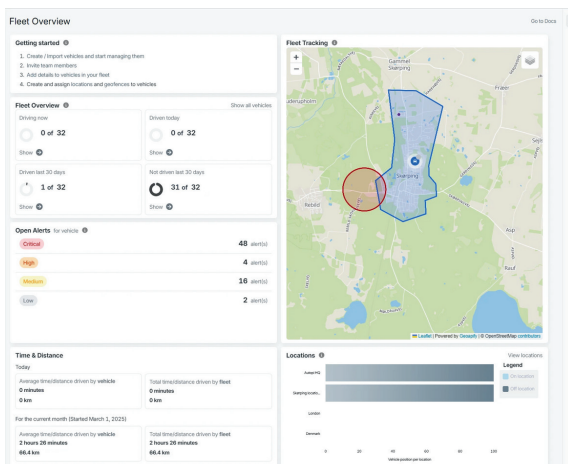
AutoPi Cloud enables intelligent device and vehicle management
The AutoPi Cloud serves as a management tool for client's devices, and ensures easy setup, management and configuration of devices.

Through the cloud you can:

- Setup decoding and filtering on device settings
- Utilize templating setup to manage large scale deploys ensuring uniform configurations and minimize manual setup of devices
- Using our advanced APIs to integrate data flows into existing ERP / BI architecture.
- Use Docker to install proprietary data, DBC files or software onto devices.
- Manage Over the air updates to devices
- Manage data transfer endpoints, event triggers, upload intervals.



AutoPi Fleet Management Fleet management for easy overview and detailed vehicle data



- Utilize real time overview of vehicle performance and telematics data such as GPS location, speed, fuel consumption, and diagnostic codes.
- Users can generate detailed reports on vehicle status, providing valuable insights for fleet optimization and operational efficiency.
- Assign Roles, Permissions, Users and Grouping to ensure correct access of data to different users of fleet management platform.